



# IMAGING ASSOCIATES

## NEUROLOGICAL VISUALIZATION WORKSTATION

Provides integration of results in 2D and 3D with numerous tools for exceptional visualization for surgical planning

- Anatomical image of choice
- fMRI activations in 2D or 3D with opacification and “outline” mode
- DTI fiber tracks with point-to-point or “exclude”; multiple ROIs
- 3D vessels with size threshold and opacification
- Skin layer and cortex opacification
- Free rotation of 3D rendering



# ADVANCED NEURO ANALYSIS

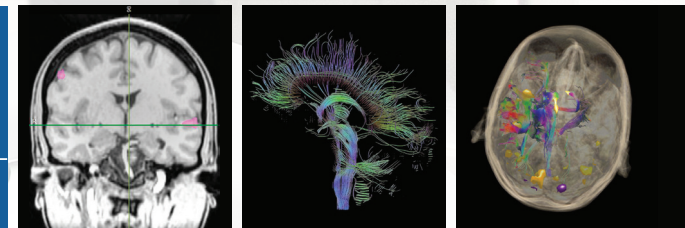
*MRI perfusion, diffusion tensor imaging, and fMRI provide valuable information for neurosurgical, chemotherapeutic, and radiation treatment planning and follow-up.*

## FUNCTIONAL MRI

Functional MRI provides clinicians with information about key areas of the brain that are involved in performing specific tasks. The fMRI scanning process is followed by post processing that creates images of the cortex with fMRI activations.

## DIFFUSION TENSOR IMAGING

Diffusion Tensor Imaging provides clinicians with the ability to create “fiber tracks” which represent information pathways in the brain. Fiber tracks, along with the fMRI activations, aid in surgical planning.





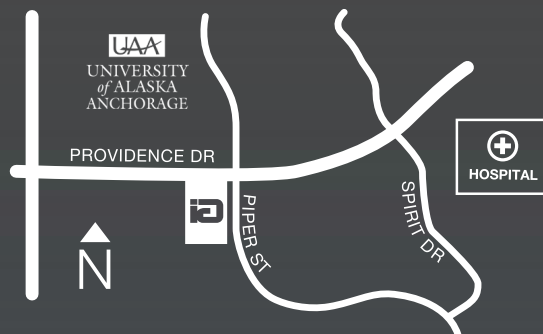
Advanced MRI techniques are now available at Imaging Associates which allow our expert neuroradiologists to see brain connections using diffusion tensor imaging (DTI), areas of activation of the brain during tasks performed in the MRI (fMRI), perfusion imaging, and MR spectroscopy (MRS). Diffusion Tensor Imaging has been used by Imaging Associates for several years, but now with a new visualization workstation, this information is available for easy review by neurosurgeons, radiation oncologists, and neurologists.

The information is exportable for pre-surgical planning as well as for intra-operative or therapeutic planning workstations. Task-based fMRI can also be incorporated now with a full complement of areas to visualize including: speech, motor, sensory, auditory, and visual regions.



Perfusion imaging allows our neuroradiologists to quickly determine areas of high-grade tumor, tumor recurrence, and assists in the evaluation of treatment effects. MR Spectroscopy is performed to examine the metabolic changes in regions of the brain. This tool is also very helpful in determining grade of tumor, treatment response, and examine for recurrence. Metabolic abnormalities other than tumor can be performed as an additional diagnostic aid in difficult neurological cases.

*These tools and visualization workstation are available for the first time in Alaska, brought to you by Imaging Associates.*



3650 PIPER STREET, SUITE A | ANCHORAGE, AK 99508

**907.222.4624**



2280 S. WOODWORTH LOOP | PALMER, AK 99645

**907.746.4646**

WWW.IMAGINGAK.COM



Expert Radiology. Exceptional Care.



## ADVANCED NEURO IMAGING



FUNCTIONAL MRI  
DIFFUSION TENSOR IMAGING



Expert Radiology. Exceptional Care.